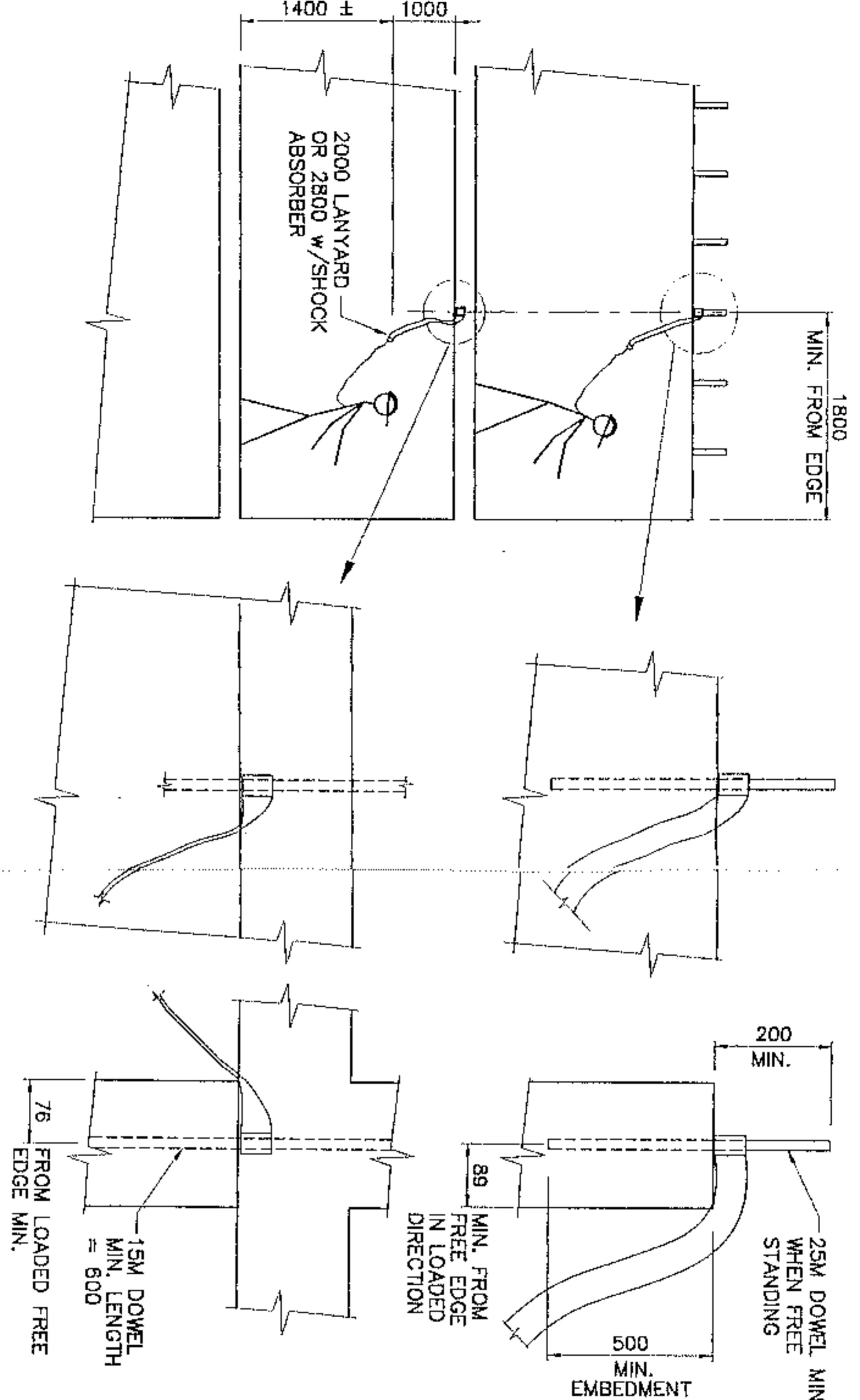
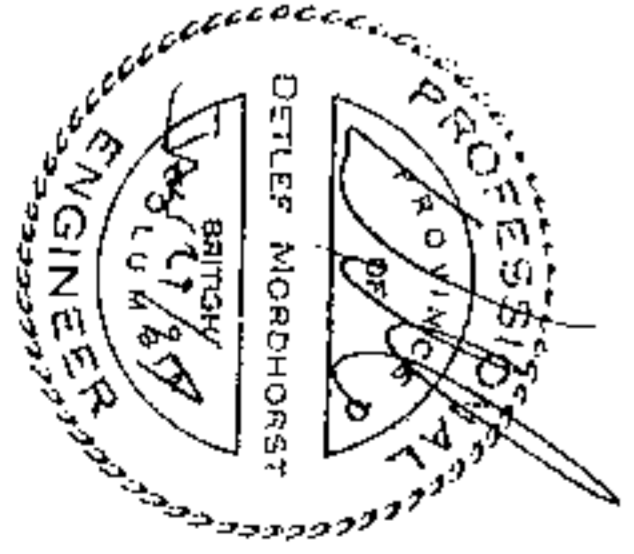


ALL SPAN ENGINEERING AND CONSTRUCTION LTD. USE OR REPRODUCTION WITHOUT PRIOR WRITTEN PERMISSION IS PROHIBITED.



TYPICAL TOP OF WALL INSTALLATION



ALL-SPAN
ENGINEERING & CONSTRUCTION LTD.

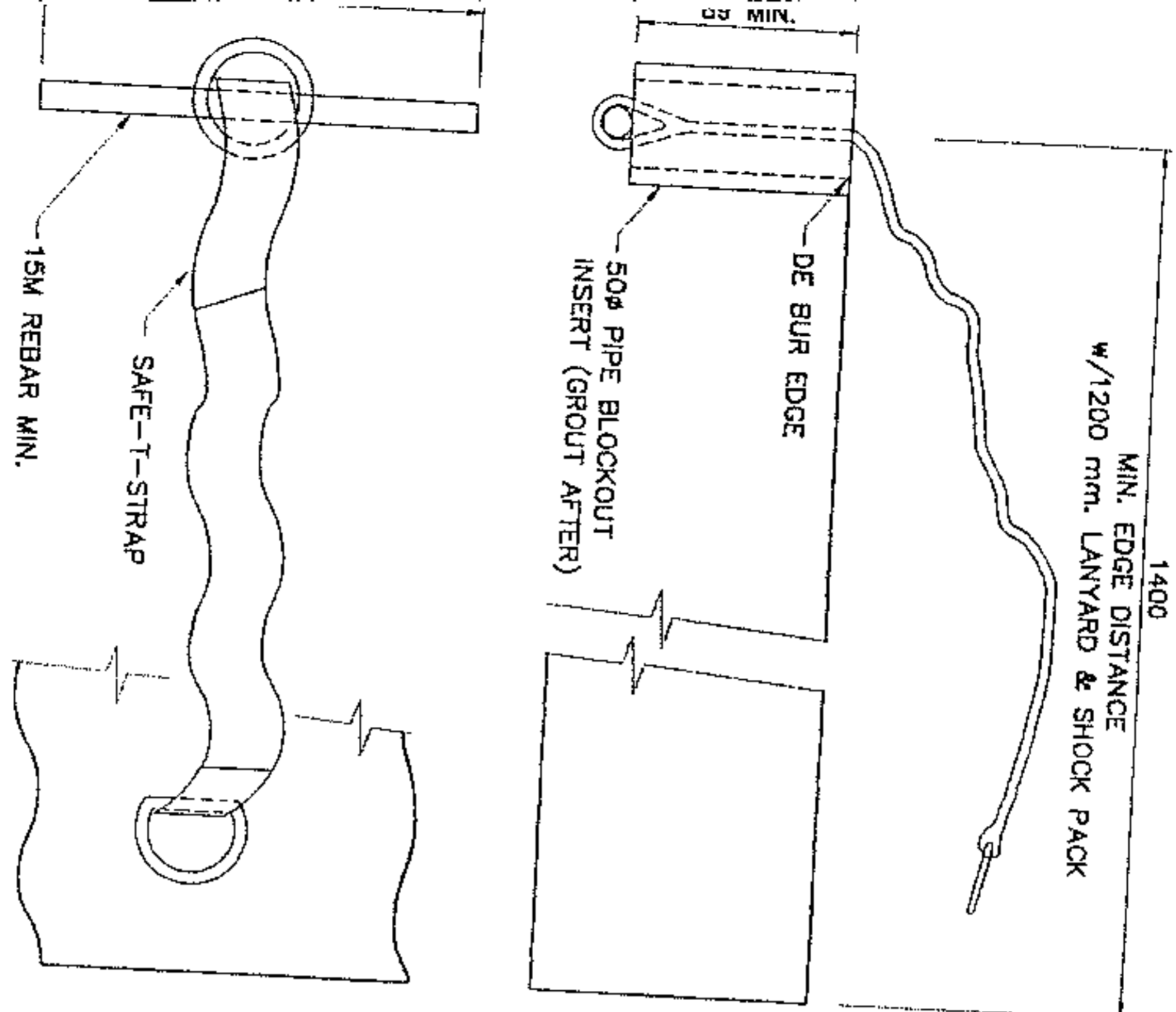
#201 - 7198 VANTAGE WAY
DELTA, B.C. V4G 1K7

PH: (604) 940-2212 FAX: (604) 940-1516

CLIENT	SAFE-T-STRAP
PROJECT	SAFE-T-STRAP FALL ARREST DEVICES
DRAWING TITLE	STRAP ANCHORAGES SHEET 2

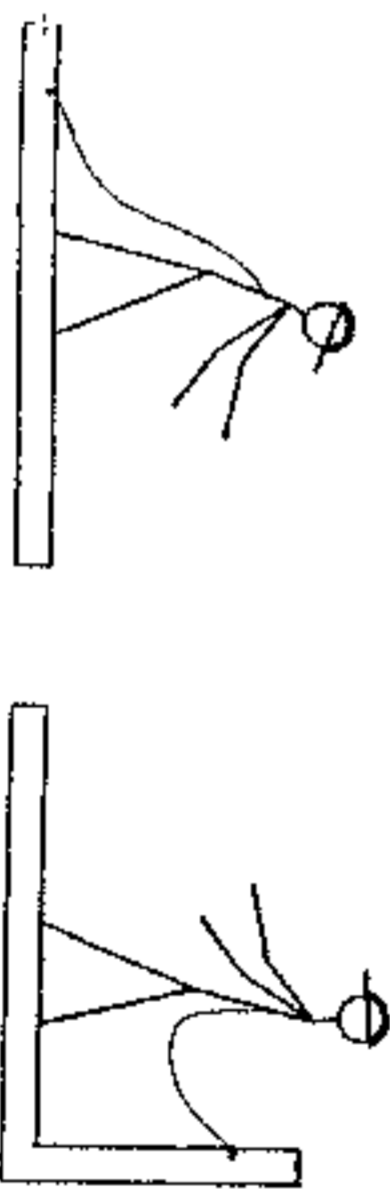
H	DATE	06/12/86
G	SCALE	AS NOTED
F	DRAWN BY	G.A.
E	DESIGN BY	B.G.
D	CHECKED BY	D.M.
C	APPROVED	
B	PROJECT No.	96124 REV.
A	DRAWING No.	2
REV.	DESCRIPTION	DATE

REF: M_SORD_A.DWG CAD: J09\96124\96124_2.DWG



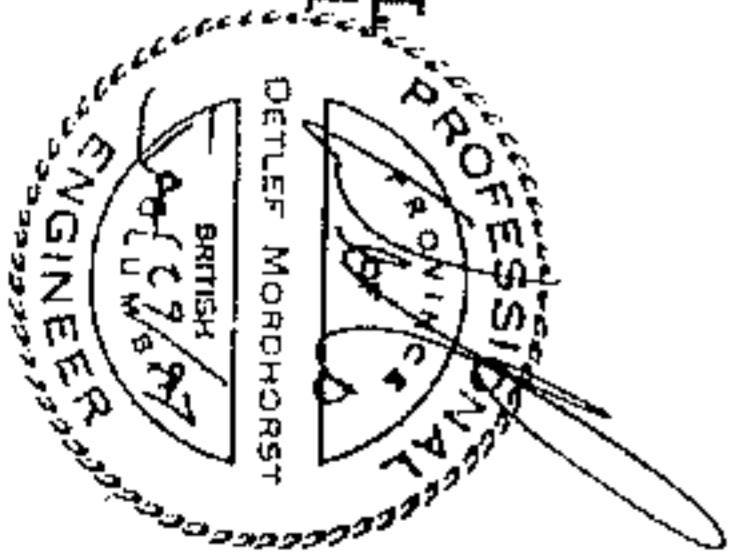
NOTES:

- 1) DESIGN LOAD 22 KN
- 2) ALL STEEL REINFORCEMENT TO CSA G 30.18 G. 400
- 3) ALL CONCRETE TO HAVE ACHIEVED A MINIMUM COMPRESSIVE STRENGTH OF 15 MPa BEFORE ANCHORAGE MAY BE USED.
- 4) NOT MORE THAN ONE WORKER TO BE ATTACHED TO ANY STRAP.
- 5) ANCHORS NOT TO BE INSTALLED CLOSER THAN 300mm TO ADJACENT ANCHORS UNLESS USED ON OPPOSING SIDES OF A WALL.
- 6) ALL WORKERS TO BE EQUIPPED WITH FULL BODY HARNESSES IN ACCORDANCE WITH WCB SPEC. 8.112
- 7) ALL LANYARDS TO CONFORM TO WCB SPEC. 8.114 AND TO BE OF THE MAXIMUM SPECIFIED LENGTH OR LESS UNLESS APPROVED BY THE BOARD
- 8) ALL CARABINERS TO WCB SPEC. 8.120
- 9) WORKERS TO BE EQUIPPED WITH PERSONAL SHOCK ABSORBING DEVICES TO WCB SPEC. 8.118 WHEN ANCHORS ARE INSTALLED BELOW 1200 mm FROM WORK SURFACE OR WHERE FREE FALL LIMITS OF 1200 mm CANNOT BE SATISFIED.
- 10) ANCHOR CAPACITY IS BASED UPON ANCHORAGE CONDITIONS AND DOES NOT PERTAIN TO, OR REFLECT THE CAPACITY OF THE STRUCTURAL ELEMENT BEING CONNECTED TO.



TYP. FLOOR INSTALLATION

TYP. MID WALL/EXT WALL INSTALLATION



All-SPAN
ENGINEERING & CONSTRUCTION LTD.

#201 - 7198 VANTAGE WAY
DELTA, B.C. V4G 1K7

PH: (604) 940-2212 FAX: (604) 940-1516

CLIENT SAFE-T-STRAP	
PROJECT SAFE-T-STRAP FALL ARREST DEVICE	
DRAWING TITLE STRAP ANCHORAGES SHEET 1	

H		DATE	06/12/98
G		SCALE	AS NOTED
F		DRAWN BY	G.A.
E		DESIGN BY	B.G.
D		CHECKED BY	D.M.
C		APPROVED	
B		PROJECT No.	95124 REV.
A		DRAWING No.	1
REV.	DESCRIPTION	DATE	